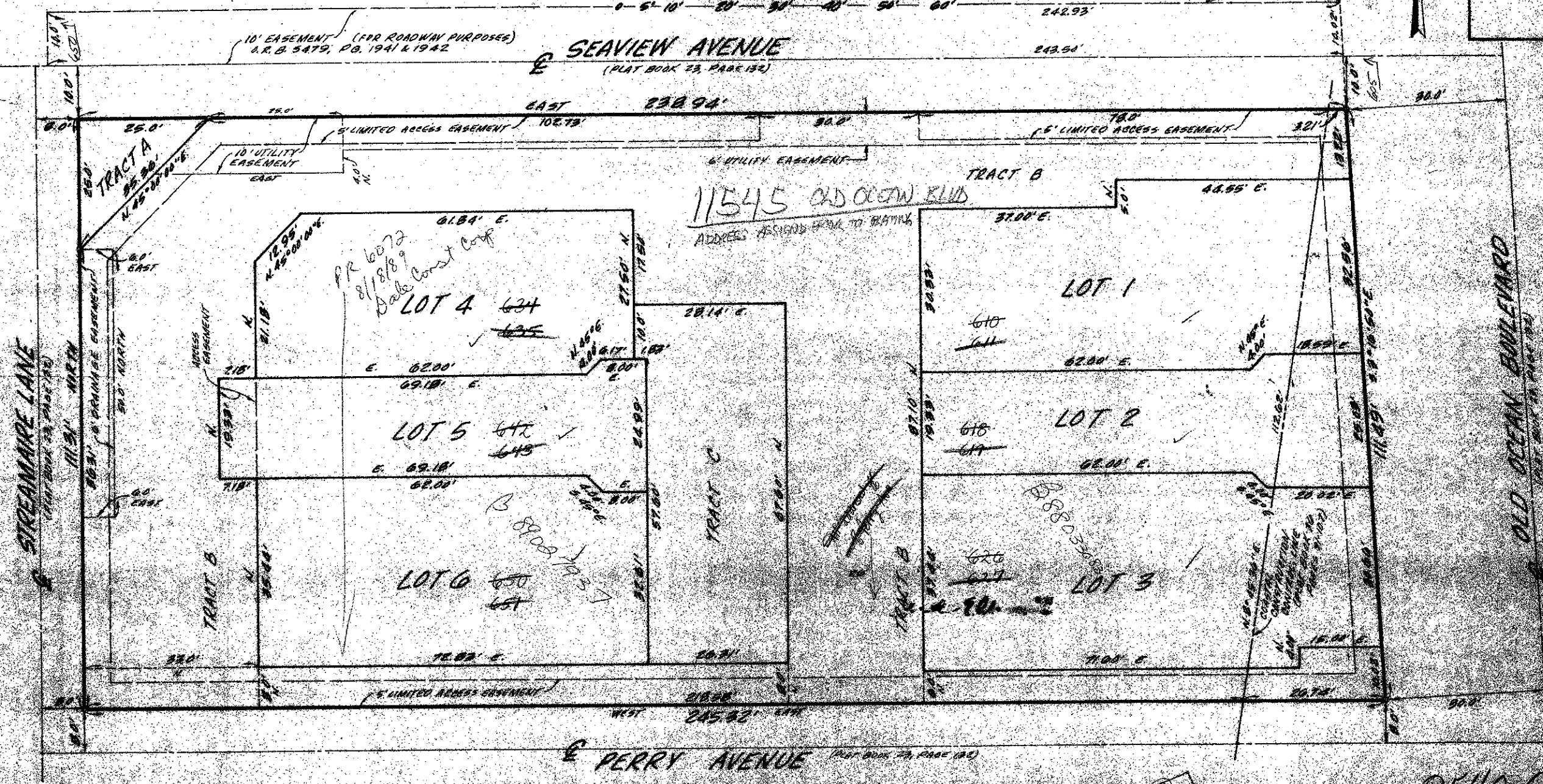


# VILLAS AT MALIBU

A REPART OF LOT C, FRANTZ PELICAN BEACH ADD - PLAT BOOK 23, PG. 132,  
SECTION 34, TOWNSHIP 15 SOUTH, RANGE 43 EAST  
PALM BEACH COUNTY, FLORIDA

SHEET 2 OF 2 SHEETS



APPROVED BY [Signature] CHECKED BY [Signature]

0540-001

6/1/43

O'BRIEN, SUTER & O'BRIEN, INC.  
ENGINEERS, ARCHITECTS, LAND PLANNERS  
200 WEST PALM BEACH BOULEVARD, SUITE 200, PALM BEACH, FLORIDA 33480

VILLAS AT MALIBU